



G+D  
Currency Technology

# BPS<sup>®</sup> M3

Your Entry to the  
High-Speed World!

1-800-669-9880  
[www.fec-ok.com](http://www.fec-ok.com)

**FEC** FINANCIAL  
EQUIPMENT  
COMPANY



[www.gi-de.com](http://www.gi-de.com)

# High-tech for maximum efficiency

**The new BPS M3 banknote processing system increases productivity, process flexibility, and capacity, whilst also significantly improving efficiency.**

Many commercial cash centers will see a significant increase in the volumes of cash they process over the coming years. The required productivity gains can most effectively be achieved by increasing the level of automation.

The BPS M3 – the new, modular, high-performance system from Giesecke+Devrient Currency Technology – today opens up entirely new possibilities in



this area for cash center operators, as it brings high-speed and outstanding performance together with a great deal of efficiency.

#### **READY FOR FUTURE CHALLENGES**

Throughput of up to 76,000 banknotes per hour, very high processing capacities, the new sensor NotaScan InOne, and outstanding life time ensure quick, precise and secure processing of large

volumes of banknotes; it also reduces the manpower required, and is designed for the connection of further automation solutions.

The modular system structure and numerous extension options enable cash centers to customize the system to a truly individual level, and to meet the challenges of the future with a great deal of flexibility.



**4.5 bn**

#### **BANKNOTES**

can be reliably processed by the BPS M3 over the course of the system's life. This corresponds to a life time of around 10 years of continuous operation.



Above: The transport section is designed for high volumes and speed. The integrated NotaScan InOne Sensor provides all the security and reliability that commercial cash centers need to operate, and to fulfill central bank frameworks.

Left: The two large delivery modules (LDMs) are typically used for sorting defined denominations or qualities. However, they can also be used as overflow stackers for rare denominations.

## Performance in every respect

**All of our expertise in the development of high-end systems for central banks and high-volume cash centers has been poured into the BPS M3. We have now specifically tailored this technological advance to suit the needs of even more commercial cash centers.**

### HIGH LEVEL OF PRODUCTIVITY

The BPS M3 reliably counts, checks, registers, sorts, stacks, and bands up to 76,000 banknotes per hour. At the same time, the number of work steps required is reduced to a minimum, while processing itself becomes significantly more reliable. Productivity can be further increased, as the system is prepared for advanced automation solutions such as automated feeding or automated packaging.

### MODULAR AND FLEXIBLE: TAILORED SUSTAINABILITY

The BPS M3 is extremely flexible: its modular structure means that it can be tailored to precisely meet specific customer requirements. The system offers many possibilities for customizing its configuration processes.

### SECURITY AND RELIABILITY AS A RESULT OF NEW SENSOR TECHNOLOGY

The new NotaScan InOne sensor is designed to reliably fulfill central bank frameworks into the future: it checks the value, authenticity, and fitness for circulation of banknotes. Banknote serialnumber and casino tickets can also be detected.

### OPTIMUM EFFICIENCY: MINIMIZE RUNNING COSTS IN THE LONG TERM

Robustness and long service life are one aspect, and maximum system availability is the other: potential long-term savings are achieved through the significant reduction in work and costs required to operate the machine. We also ensure the highest possible system availability, with innovative service solutions, and a global service network.

# The most important features at a glance:

**1** Throughput of up to 76,000 banknotes per hour

**5** Very easy and intuitive to use, via a 15" touchscreen

**2** Large Continuous Feeder (LCF): Large feeding compartment with constant singling (capacity of up to 4,000 banknotes)

**6** Cutting-edge sensor technology (NotaScan InOne) for reliable checking of fitness properties, authentication features, serial numbers, and more

**3** Two different output modules:  
▶ Large Delivery Module (LDM) with a capacity of 2 x 2,000 banknotes  
▶ Delivery Module (DM) with 4 delivery stackers, each with one bander

**7** Designed to enable further productivity improvements through the addition of advanced automation solutions such as NotaTracc

**4** Modular design allowing up to 5 delivery modules in any combination (DM and LDM)



# Tailored to individual requirements

The BPS M3 can be specifically adjusted to meet current and future needs, whilst custom-fit hardware and software options ensure production is even more efficient.

### Input and operation module

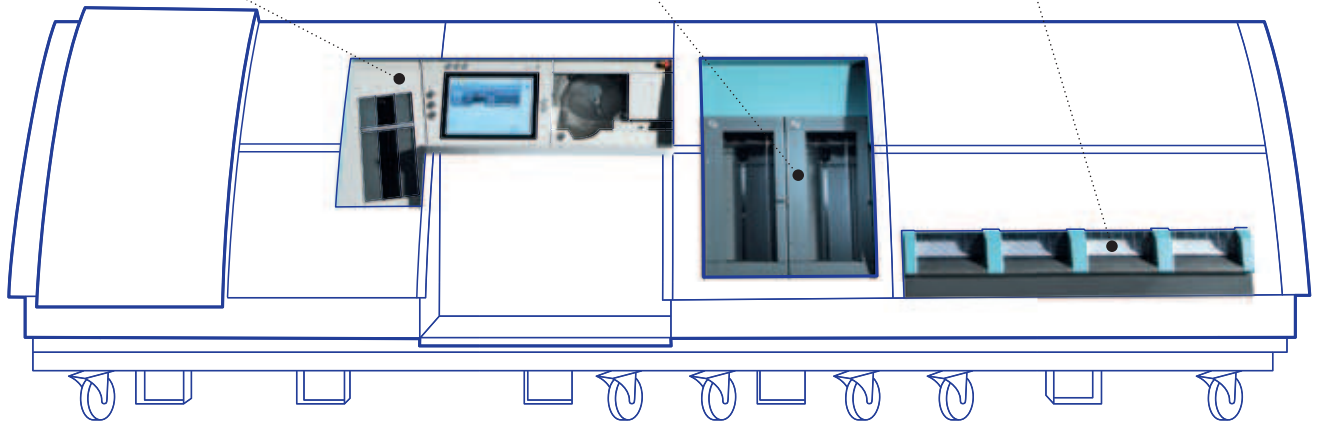
With a large touchscreen, Large Continuous Feeder (LCF) (input capacity: up to 4,000 banknotes), a reject compartment and the sensor NotaScan InOne.

### Large Delivery Module (LDM)

For outputting loose banknotes.  
Capacity: 2 x 2,000 banknotes.

### Delivery module

With 4 delivery stackers, each with one bander

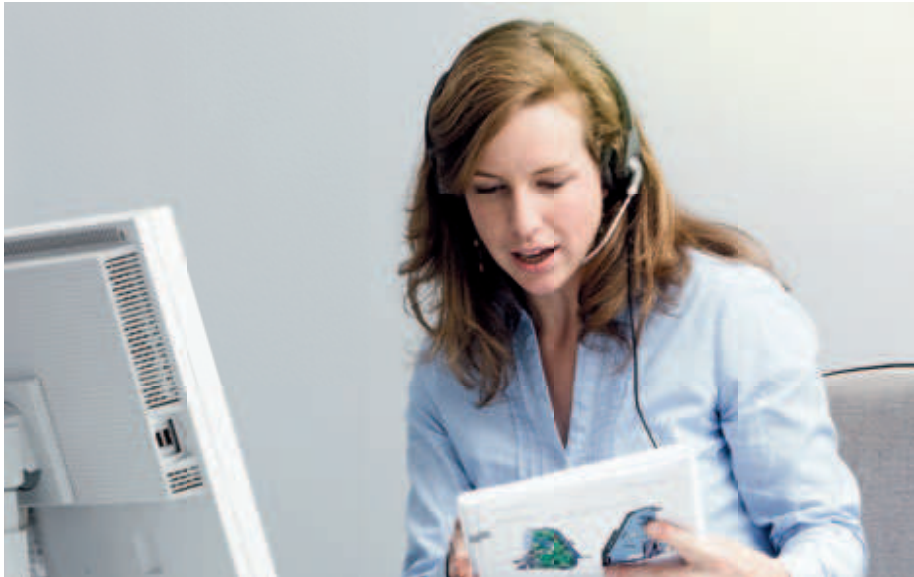


### NotaTracc for automated feeding (optional)

The NotaTracc loading system consists of a loading module (NotaTracc L) and special banknote containers (NotaTracc T). It enables the BPS M3 to be loaded automatically – and increases the loading capacity to up to 40,000 banknotes.

### Planned options for output:

- ▶ Delivery module with bundler and connection of a NotaPack
- ▶ Delivery on a conveyor belt to a central bundling and packing station



## The basis of productivity is availability

**With our needs-oriented specialist advice and fully comprehensive service portfolio, G+D customers benefit from full productivity and smooth operation of systems – for the entire life of the products.**

### **G+D CONSULTING SERVICES: FOR SOLUTIONS THAT ARE THE PERFECT FIT**

Our experts analyze the individual needs, existing processes, special requirements, system environment and more. Based on this analysis, we will recommend the right solution for your operation, and it will be integrated smoothly into your production processes.

### **G+D SERVICE: ALWAYS AT YOUR SIDE, WHENEVER AND WHEREVER YOU NEED IT**

Our dense, global service network ensures that customers can rely on our support at all times. Your systems are kept up-to-date with frequent updates and upgrades – which can even boost productivity after installation.

### **G+D REMOTE SERVICE: THE FASTEST SOLUTIONS VIA REMOTE ACCESS**

Use G+D remote services to optimize up-time of your systems. A large proportion of system failures can be immediately responded to and resolved using G+D remote access. Our service specialists identify the issue and put it right in an instant.

### **BPS ECO-SYSTEM: FUTUREPROOF USE OF DIGITAL POTENTIAL**

BPS Eco-System is an innovative portfolio of highly secure networked software products and web services that boost the efficiency of cash management and banknote processing.



**BPS Eco-Protect** is an industry firewall which efficiently protects a BPS in a customer's environment against most malware attacks, and enables secure communication to and from the BPS.



**BPS Eco-Remote** provides a highly secure remote management solution for BPS. It allows remote monitoring, performance management, diagnostics and even software updates to be provided through G+D, or using in-house or third-party personnel, without local presence of a service engineer.



**Compass VMS** (Vault Management System) is a comprehensive, process-oriented cash center management solution, enabling all of your cash management processes to be automated, optimized, and reliably monitored.

# Securing Values: Giesecke+Devrient Currency Technology

G+D has played a significant role in advancing the development of banknotes since 1852 – and always with the aim of offering our customers a crucial advantage.

We are now an end-to-end provider for the whole cash cycle, and have unique and thorough expertise in each application area: from counterfeit-proof banknote design and highly efficient banknote processing, to reliable banknote destruction. This extensive knowledge is incorporated into everything we do for our customers.

**Let's shape the future of the cash cycle together!**

## Ready for the future?

Our experts will be happy to show you how your operation can be made futureproof through increased productivity, flexibility and capacities – whilst significantly reducing your overall costs.

**Let's talk!**



**Financial Equipment Company**  
13000 S. Elwood Ave.  
P.O. Box 2002  
Jenks, OK 74037  
Phone: +1 (800) 669-9880  
Web: [www.fec-ok.com](http://www.fec-ok.com)

© Giesecke+Devrient Currency Technology GmbH, 2017  
BPS® is a registered Trademark of Giesecke+Devrient Currency Technology GmbH  
All technical data subject to change.

## TECH FACTS

### Throughput

up to 76,000 BN/h

### Singler Capacity

(depending on BN quality)

up to 4,000 BN

### BN formats (Length x Width)

100–180 x 60–90 mm

### Dimensions (H x W x D)

BPS M3-12

6,518 x 1,020 x 1,488 cm

### Weight

BPS M3-12

~ 1,859 kg

### Power supply options

230 V/400 V, 50/60 Hz

120 V/208 V, 50/60 Hz

### Power consumption

BPS M3-12

~ 3.0 kW

### Power consumption of the required LVM pneumatic module

(Can be located outside processing room)

~ 3.3 kW

### Noise level

64–71 dB(A)

### Temperature range

15–30°C

### Relative humidity

30–80%

### External connections

2 x LAN, 3 x USB

### Certificates

CE, GS